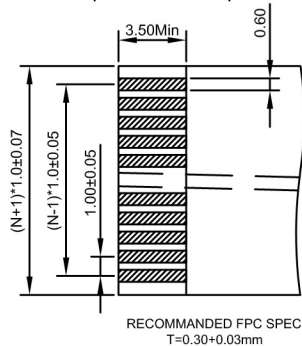
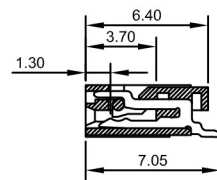
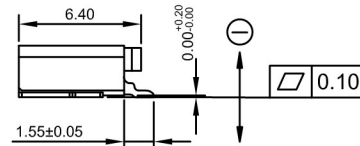
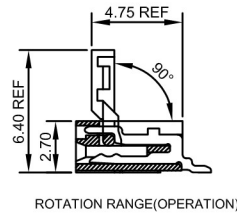
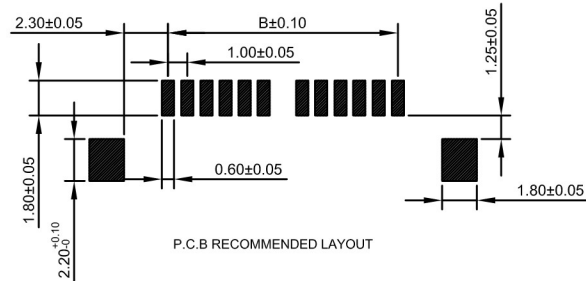
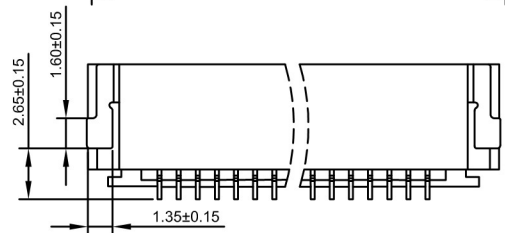
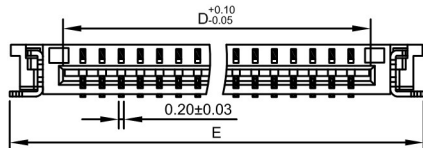
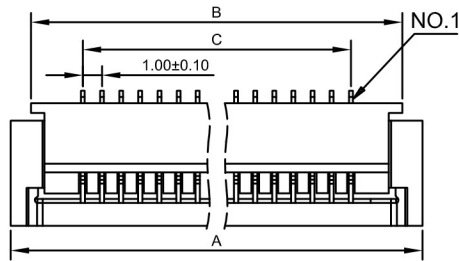


# CROWN LINK®

## 專業薄膜開關連接器第一品牌

# ROHS



- ◆ Specifications:
  - Operating Voltage:50V
  - Current Rating: 0.5A
  - Withstand Voltage: 500V
  - Contact Resistance:30mΩ
  - Insulation resistance:500MΩ
  - Operating Temperature:-25°C~+85°C

### ◆ PART NO.

- F1.0 - XXSBBTJ
- MOULD NO.
  - TUBE
  - FLIP LOCK
  - HORIZONTAL BOTTOM CONTACT
  - SMT
  - CIRCUITS NUMBER 04 TO 35
  - 1.0 mm SPACING
  - FFC CONNECTOR

PIN NO.	DIMENSIONS					PIN NO.	DIMENSIONS				
	A	B	C	D	E		A	B	C	D	E
4	10.50	8.40	3.00	5.10	10.60	20	26.50	24.40	19.00	21.10	26.60
5	11.50	9.40	4.00	6.10	11.60	21	27.50	25.40	20.00	22.10	27.60
6	12.50	10.40	5.00	7.10	12.60	22	28.50	26.40	21.00	23.10	28.60
7	13.50	11.40	6.00	8.10	13.60	23	29.50	27.40	22.00	24.10	29.60
8	14.50	12.40	7.00	9.10	14.60	24	30.50	28.40	23.00	25.10	30.60
9	15.50	13.40	8.00	10.10	15.60	25	31.50	29.40	24.00	26.10	31.60
10	16.50	14.40	9.00	11.10	16.60	26	32.50	30.40	25.00	27.10	32.60
11	17.50	15.40	10.00	12.10	17.60	27	33.50	31.40	26.00	28.10	33.60
12	18.50	16.40	11.00	13.10	18.60	28	34.50	32.40	27.00	29.10	34.60
13	19.50	17.40	12.00	14.10	19.60	29	35.50	33.40	28.00	30.10	35.60
14	20.50	18.40	13.00	15.10	20.60	30	36.50	34.40	29.00	31.10	36.60
15	21.50	19.40	14.00	16.10	21.60	31	37.50	35.40	30.00	32.10	37.60
16	22.50	20.40	15.00	17.10	22.60	32	38.50	36.40	31.00	33.10	38.60
17	23.50	21.40	16.00	18.10	23.60	33	39.50	37.40	32.00	34.10	39.60
18	24.50	22.40	17.00	19.10	24.60	34	40.50	38.40	33.00	35.10	40.60
19	25.50	23.40	18.00	20.10	25.60	35	41.50	39.40	34.00	36.10	41.60

				.X ±0.15
				.XX ±0.10
A	FIRST DRAWING	UNA	2019.06.26	
REV/版本	MODIFIED CONTENT /變更內容	DRAWN/繪圖	DATE/日期	TOLERANCE RANGE/公差範圍

DRAWN/繪圖	DATE/日期
UNA	2019.06.26
CHECK BY/審查	DATE/日期
JASON	2019.06.26
APPROVED BY/核准	DATE/日期
WENDY	2019.06.26
PACKAGE/包裝	TUBE

<b>CROWN LINK® THE LEADING MANUFACTURER OF FPC &amp; FFC CONNECTOR, HOUSING AND DOME.</b>				
PRODUCT NAME/品名: FPC1.0mm PITCH TOP OF CONTACT SMT				
PART NO./料號	PIN NUMBER/針數	SCALE/比例	SIZE/圖號	UNIT/單位
F1.0-XXSBBTJ	04-35		A4	mm
MATERIAL/材質	COLOR/顏色	ANGLE OF VIEW/視角	SHEET/頁碼	REV/版本
LCP UL 94V-0	BLACK COLOR		1 OF 1	A