

4

3

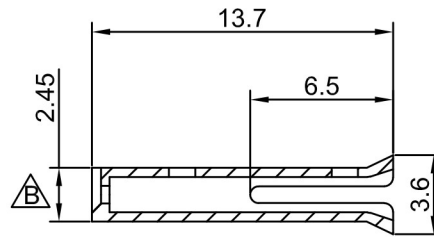
2

1

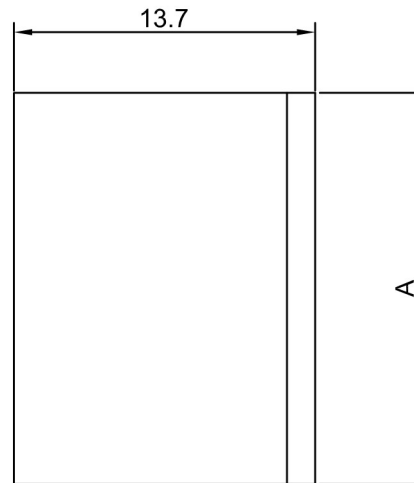
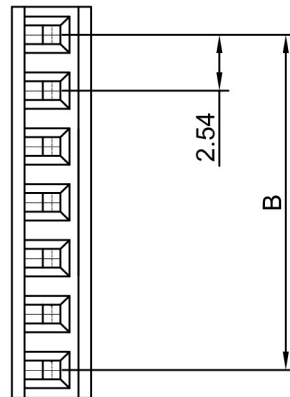
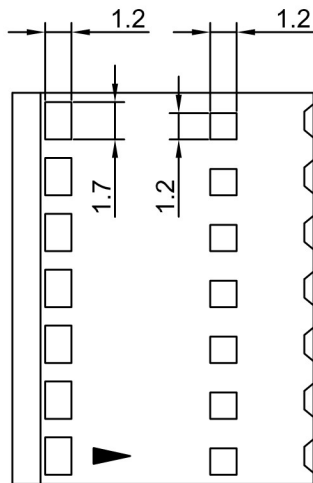
CROWN LINK[®]

專業薄膜開關連接器第一品牌

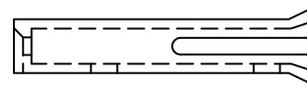
RoHS



- ◆ FOR 2806 SERIES CONNECTOR
- ◆ SPECIFICATIONS
 - VOLTAGE RATING: 250 VAC RMS
 - CURRENT RATING: 2A
 - INSULATION RESISTANCE: 1000 MΩ MIN
- ◆ ENVIRONMENTAL
 - TEMPERATURE RANGE: -25°C~+85°C
- ◆ DIMENSION: N=CIRCUIT NO.
 - A=2.54*N
 - B=2.54*(N-1)



◆ PART NO.
 2806H - XXNH
 SERIES NO. | MOLD NO. | NO LOGO
 CIRCUIITS NUMBER 02 TO 26



				一般公差 ± 0.2
B	HEIGHT CHANGE	TRACY	2016.12.19	
A	FIRST RELEASE	ANNIE	2016.12.19	
REV/版本	MODIFIED CONTENT /變更內容	DRAWN/繪圖	DATE/日期	

TOLERANCE RANGE/公差範圍

DRAWN/繪圖	DATE/日期	CROWN LINK[®] THE LEADING MANUFACTURER OF FPC & FFC CONNECTOR, HOUSING AND DOME.						
TRACY	2016.09.19	PRODUCT NAME/品名: 2.54mm PITCH HOUSING FOR FFC/FPC						
CHECK BY/審查	DATE/日期	PART NO./料號	PIN NUMBER/針數	SCALE/比例	SIZE/圖號	UNIT/單位		
VIVIAN	2016.09.19	2806H-XXNH	2-26 PIN	3:1	A4	mm		
APPROVED BY/核准	DATE/日期	MATERIAL/材質	COLOR/顏色	ANGLE OF VIEW/視角	SHEET/頁碼	REV/版本		
JASON	2016.09.19	NYLON 66 UL94V-0	BLACK COLOR		1 OF 1	B		
PACKAGE/包裝	02-06 PIN 1,000 PCS/BAG 07-26 PIN 500 PCS/BAG							

D

D

C

C

B

B

A

A