

4

3

2

1

CROWN LINK[®]

專業薄膜開關連接器第一品牌

ROHS



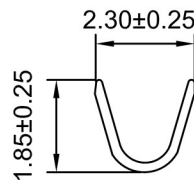
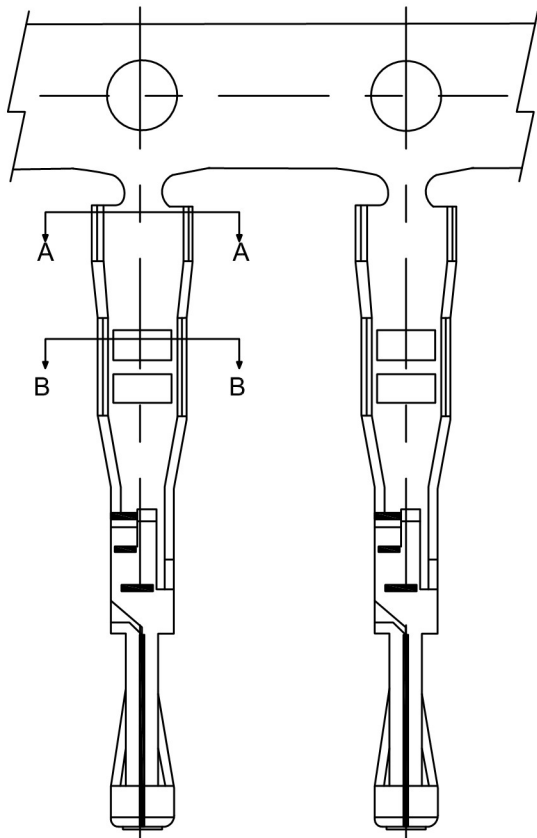
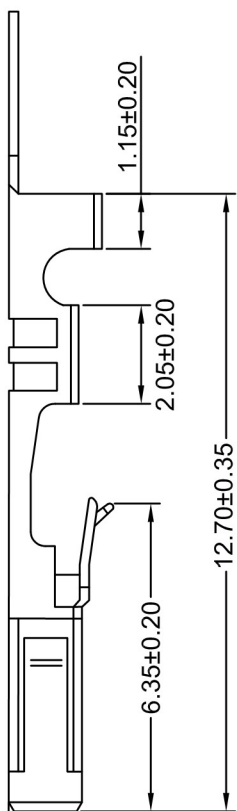
0T:TIN PLATED



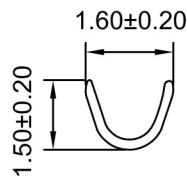
0G:GOLD PLATED

- ◆ FOR 2803 SERIES HOUSING
- ◆ SPECIFICATIONS
 - VOLTAGE RATING: 250V AC/DC
 - CURRENT RATING: 2A AC/DC
 - CONTACT RESISTANCE: 20mΩ MAX
 - WITHSTANDING VOLTAGE: 500V AC/MINUTE
 - INSULATION RESISTANCE: 1000 MΩ MIN
- ◆ ENVIRONMENTAL
 - TEMPERATURE RANGE: -25°C~+85°C
- ◆ WIRE RANGE:AWG#22~#26
- ◆ PART NO.

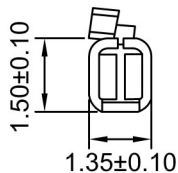
2803	- 15K	- 0T(0G)	- FJ	MOLD NO.
SERIES NO.	15K/REEL	0T:PLATED TIN	0G:PLATED GOLD	OTHER PLATINGS ON REQUEST
		FEMALE		



A-A



B-B



.X ±0.50 .XX ±0.30 .XXX ±0.15 Angle ± 2°	DRAWN/繪圖 UNA	DATE/日期 2019.06.17	CROWN LINK[®] THE LEADING MANUFACTURER OF FPC & FFC CONNECTOR, HOUSING AND DOME. PRODUCT NAME/品名 5.08mm PITCH FFC/FPC CONNECTOR			
	CHECK BY/審查 JASON	DATE/日期 2019.06.17				
TOLERANCE RANGE/公差範圍	APPROVED BY/核准 WENDY	DATE/日期 2019.06.17	PART NO./料號 2803-15K-0T(0G)-FJ	SCALE/比例 6:1	SIZE/圖號 A4	UNIT/單位 mm
	PACKAGE/包裝 15,000PCS/REEL		MATERIAL/材質 PHOSPHOR BRONZE	ANGLE OF VIEW/視角 	SHEET/頁碼 1 OF 1	REV/版本 A

D

D

C

C

B

B

A

A