

4

3

2

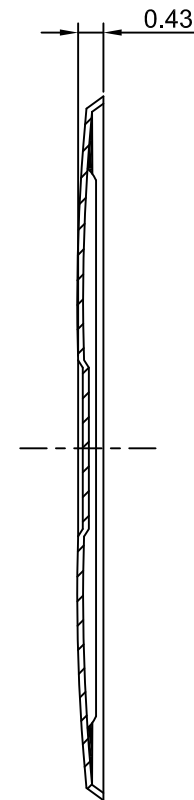
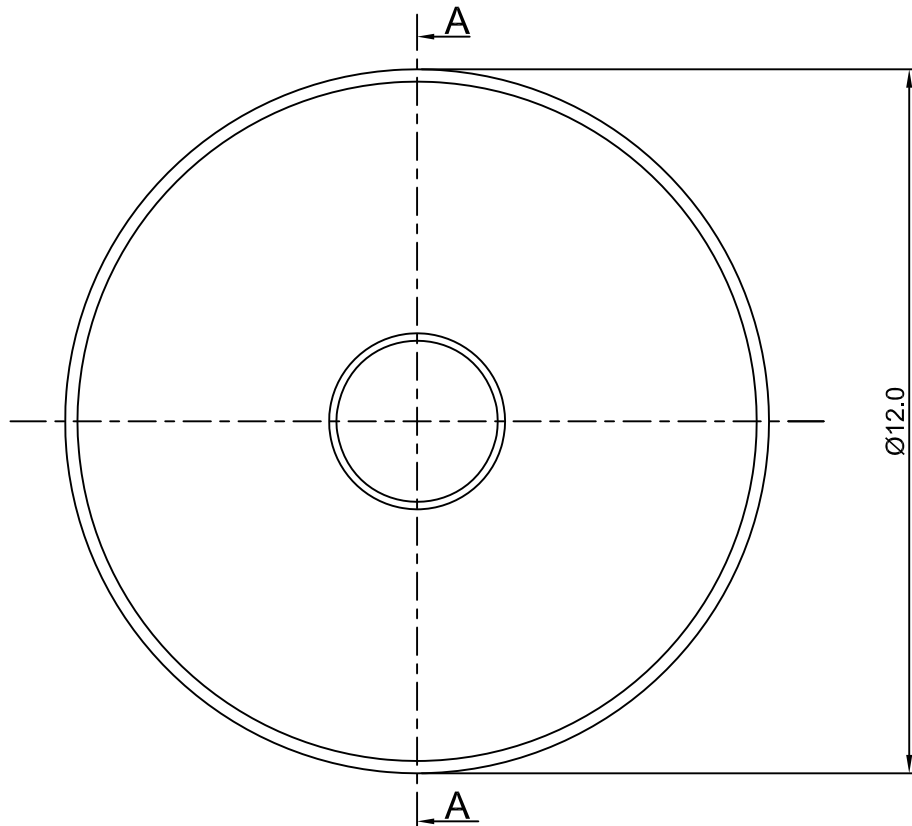
1

CROWN LINK[®]

專業薄膜開關連接器第一品牌



ROHS



SECTION A-A

◆ SPECIFICATIONS

TRIP FORCE: 280 ± 30 g

CLICK RATIO: MIN 35 %

◆ TESTING CONDITIONS

FORCE TEST PROBE: HARD POINTED

LIFE TEST PROBE: RB 60° SILICON ROUND HEAD

LIFE TEST FORCE: 340 g

LIFE TEST SPEED: 180 CYCLE / MIN

BURR: MAX 0.05 MM

UNLESS OTHERWISE SPECIFIED TESTING METHOD

ACCORDING TO CROWN LINK STANDARD PROCEDURE

△ DOME REST SURFACE.



NORMAL DESIGN: CONTACT POINT ALIGN WITH DOME REST SURFACE, WEAKER TACTILE FEELING DURING CONTACT MADE.

△ DOME REST SURFACE.



OVER TRAVEL DESIGN: OVER TRAVEL ALLOWABLE, CONTACT POINT AT 0.1 mm BELOW DOME REST SURFACE.

C	ADD APPLICATION EXAMPLE	TRACY	2012.10.20	X.XX ±0.10
B	NEW DRAWING FORMAT	TRACY	2008.10.19	
A	FIRST DRAWING	TRACY	2005.03.20	
REV/版本	MODIFIED CONTENT /變更內容	DRAWN/繪圖	DATE/日期	

DRAWN/繪圖	DATE/日期	CROWN LINK[®] THE LEADING MANUFACTURER OF FPC & FFC CONNECTOR, HOUSING AND DOME.				
TRACY	2012.10.20	PRODUCT NAME/品名				
CHECK BY/審查	DATE/日期	METAL DOME				
VIVIAN	2012.10.20	PART NO./料號	THICKNESS/厚度	SCALE/比例	SIZE/圖號	UNIT/單位
APPROVED BY/核准	DATE/日期	CL12-RSD-280T	0.10 mm	8:1	A4	mm
JASON	2012.10.20	MATERIAL/材質		ANGLE OF VIEW/視角	SHEET/頁碼	REV/版本
PACKAGE/包裝	10,000PCS/BAG	STAINLESS STEEL SUS 304		1 OF 1	1 OF 1	C

D

D

C

C

B

B

A

A