

4

3

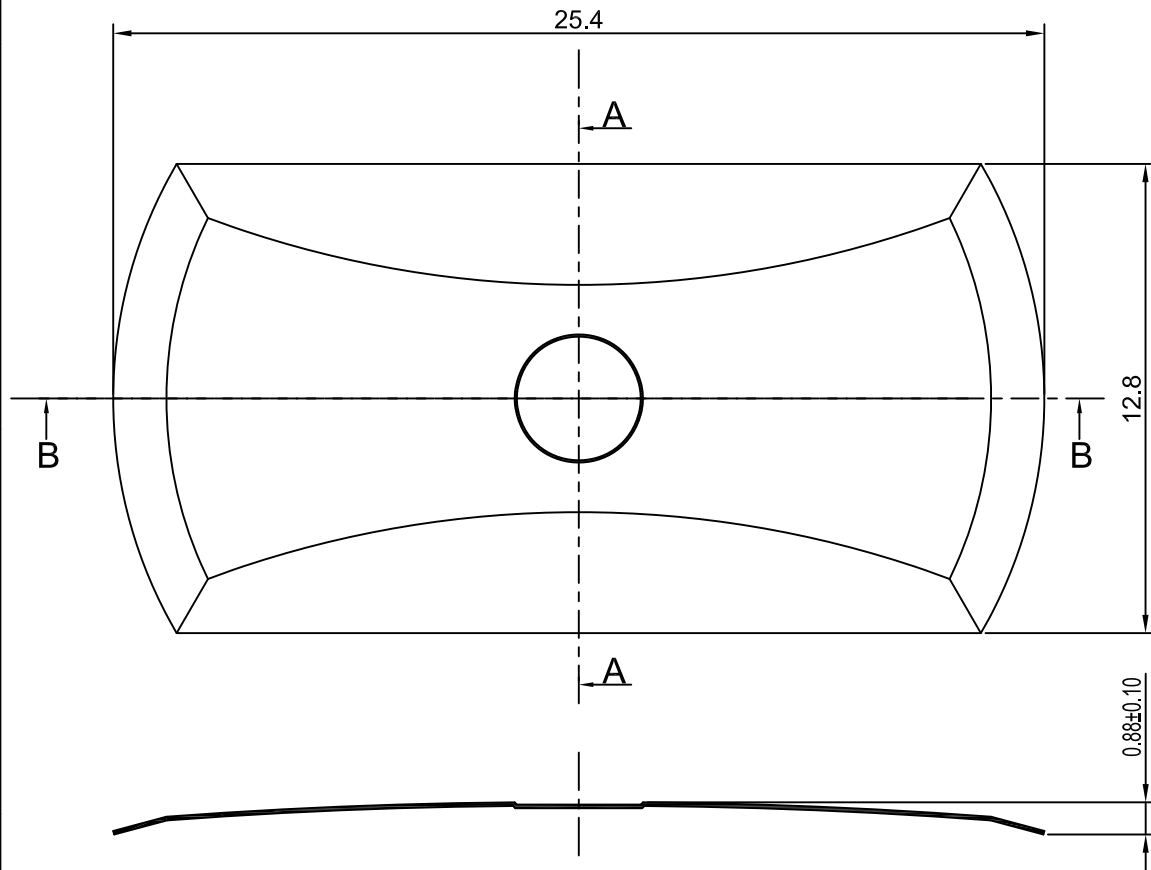
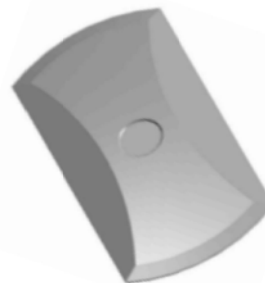
2

1

# CROWN LINK<sup>®</sup>

專業薄膜開關連接器第一品牌

ROHS



### ◆ SPECIFICATIONS

TRIP FORCE: 340 ± 30 g

CLICK RATIO: MIN 30 %

### ◆ TESTING CONDITIONS

FORCE TEST PROBE: HARD POINTED

LIFE TEST PROBE: RB 60° SILICON ROUND HEAD

LIFE TEST FORCE: 410 g

LIFE TEST SPEED: 180 CYCLE / MIN

BURR: MAX 0.05 MM

UNLESS OTHERWISE SPECIFIED TESTING METHOD

ACCORDING TO CROWNLINK STANDARD PROCEDURE

SECTION A - A

SECTION B - B

				X.XX ±0.10
B	ADD CONTACT LIFE SPEC & CORRECT DRAWING MISTAKE	TRACY	2016.07.13	
A	FIRST DRAWING	ANNIE	2013.08.28	
REV/版本	MODIFIED CONTENT /變更內容	DRAWN/繪圖	DATE/日期	
				TOLERANCE RANGE/公差範圍

DRAWN/繪圖	DATE/日期	<b>CROWN LINK<sup>®</sup> THE LEADING MANUFACTURER OF FPC &amp; FFC CONNECTOR, HOUSING AND DOME.</b>			
TRACY	2016.07.13	PRODUCT NAME/品名			
CHECK BY/審查	DATE/日期	METAL DOME			
VIVIAN	2016.07.13	PART NO./料號	THICKNESS/厚度	SCALE/比例	SIZE/圖號
APPROVED BY/核准	DATE/日期	CL25.4-END-340T	0.12 mm	5:1	A4
JASON	2016.07.13	MATERIAL/材質	ANGLE OF VIEW/視角	SHEET/頁碼	REV/版本
PACKAGE/包裝	10,000PCS/BAG	DOUBLE SIDE NICKEL PLATED STAINLESS STEEL SUS 304	⊕	1 OF 1	B

D

D

C

C

B

B

A

A