

4

3

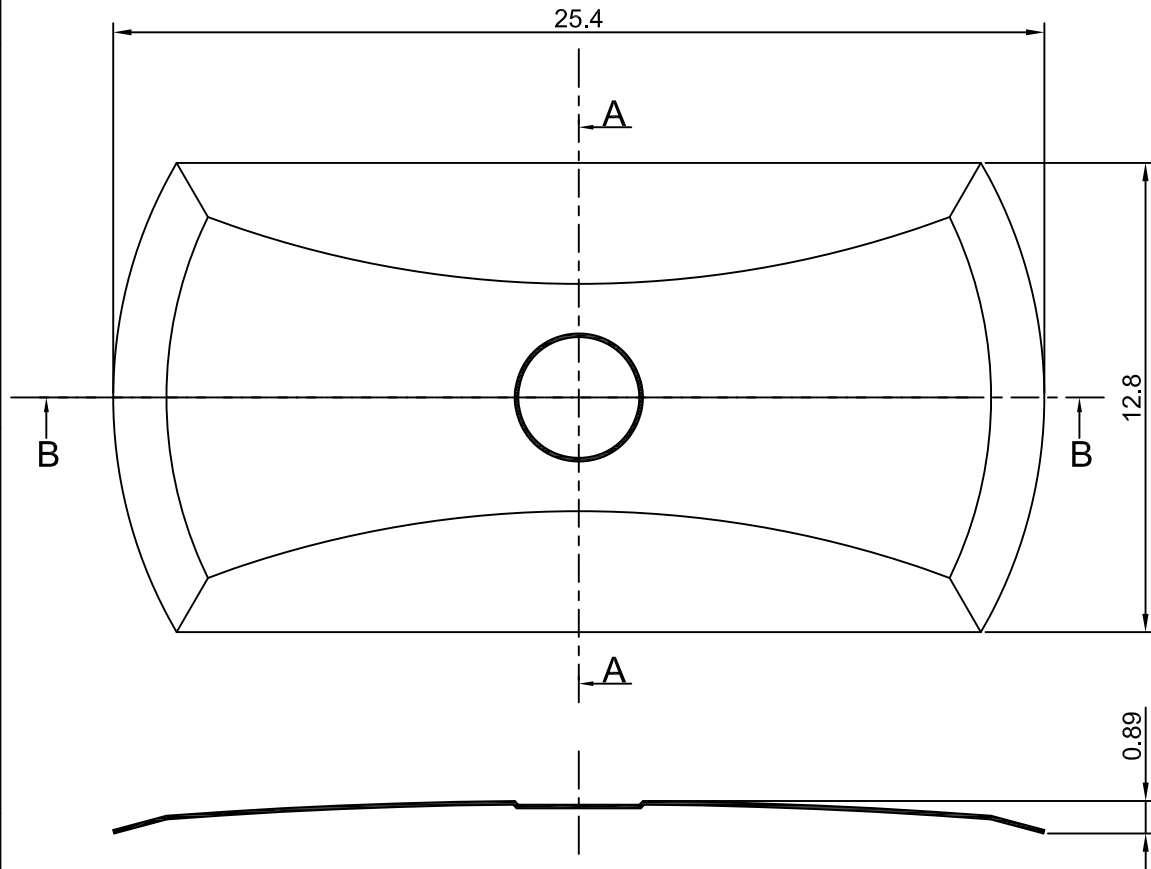
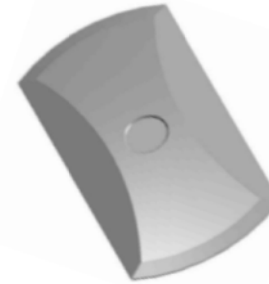
2

1

CROWN LINK[®]

專業薄膜開關連接器第一品牌

ROHS



SECTION A - A

SECTION B - B

- ◆ SPECIFICATIONS
 - TRIP FORCE: 280 ± 30 g
 - CLICK RATIO: MIN 45 %
- ◆ TESTING CONDITIONS
 - FORCE TEST PROBE: HARD POINTED
 - LIFE TEST PROBE: RB 60° SILICON ROUND HEAD
 - LIFE TEST FORCE: 340 g
 - LIFE TEST SPEED: 180 CYCLE / MIN
 - BURR: MAX 0.05 MM
 - UNLESS OTHERWISE SPECIFIED TESTING METHOD ACCORDING TO CROWNLINK STANDARD PROCEDURE

				X.XX ±0.10
A	FIRST DRAWING	ANNIE	2013.08.28	
REV/版本	MODIFIED CONTENT /變更內容	DRAWN/繪圖	DATE/日期	

DRAWN/繪圖	ANNIE	DATE/日期	2013.08.28	CROWN LINK[®] THE LEADING MANUFACTURER OF FPC & FFC CONNECTOR, HOUSING AND DOME.					
CHECK BY/審查	VIVIAN	DATE/日期	2013.08.28	PRODUCT NAME/品名 METAL DOME					
APPROVED BY/核准	JASON	DATE/日期	2013.08.28	PART NO./料號	THICKNESS/厚度	SCALE/比例	SIZE/圖號	UNIT/單位	
PACKAGE/包裝	10,000PCS/BAG	MATERIAL/材質	STAINLESS STEEL SUS 304	CL25.4-ESD-280T	0.10 mm	5:1	A4	mm	
		ANGLE OF VIEW/視角		SHEET/頁碼	1 OF 1	REV/版本	A		